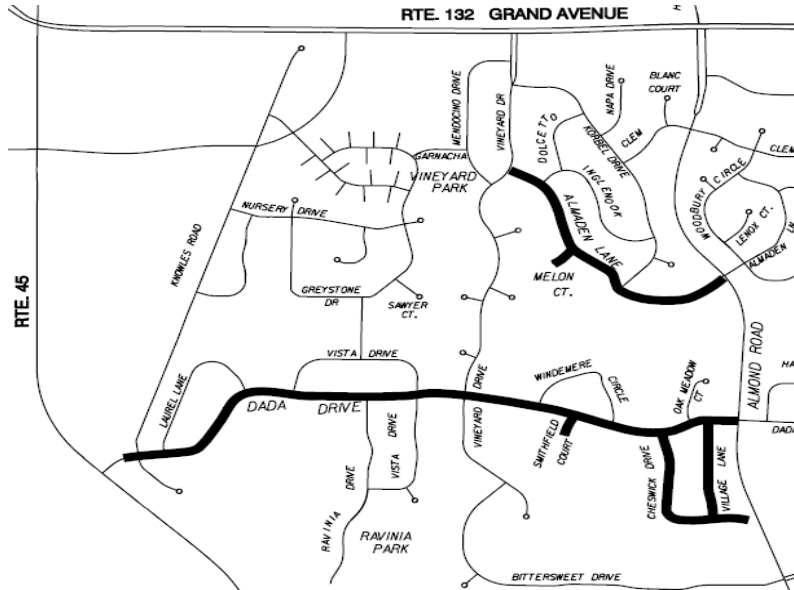


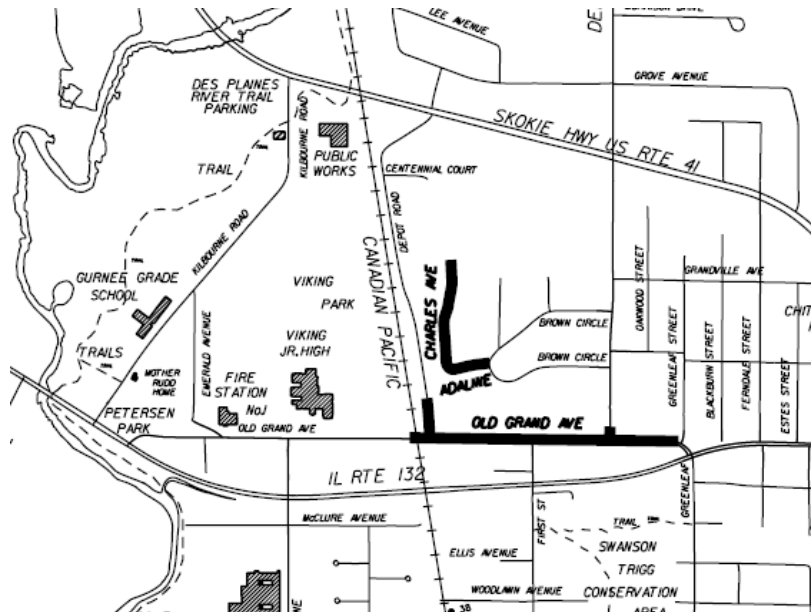
2009 STREET RESURFACING PROGRAM

The following roadways are scheduled to be resurfaced as part of the Village's 2009 Street Resurfacing Capital Project:

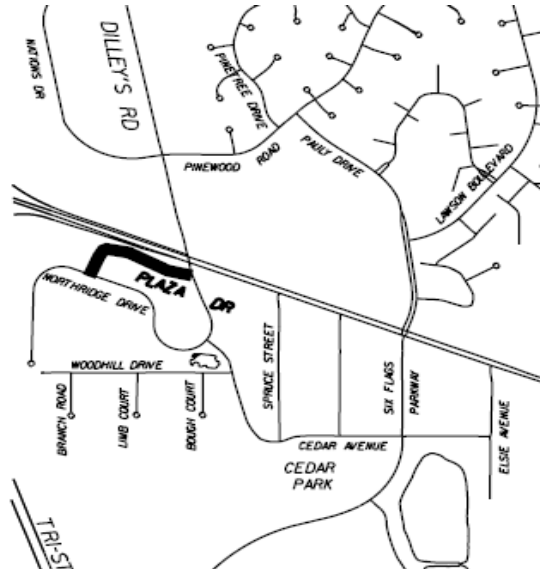
- **Dada Drive** – Almond Rd. to Rte. 45
- **Smithfield Ct.** – South of Dada Dr.
- **Cheswick Dr.** – South of Dada Dr.
- **Village Lane** – Dada to Cheswick
- **Almaden Lane** – Vineyard to Almond
- **Melon Ct.** – South of Almaden Ln.



- **Old Grand Ave.** – C.P. Railroad underpass to Greenleaf St.
- **Charles Ave.** – Adaline Ct. to north end.
- **Adaline Ct.** – Brown Cir. to Charles Ave.



- **Plaza Drive** – Dilley's Rd. to Northridge Dr.



These improvements will include curb and sidewalk repairs, milling (removal) of the existing roadway surface, roadway patching, paving of a new roadway surface and restriping of the roadways. The construction activities are scheduled to begin the week of May 25th starting on Old Grand Ave and progressing throughout the summer to complete the improvements.

Project status and updates can be accessed via the following Village web link:

http://www.gurnee.il.us/community_dev/engineering/road_construction_updates/index.html

If you should have any questions regarding this project you may contact the Village Engineering Division at 847-599-7550. Thank you in advance for your cooperation during these roadway improvements.