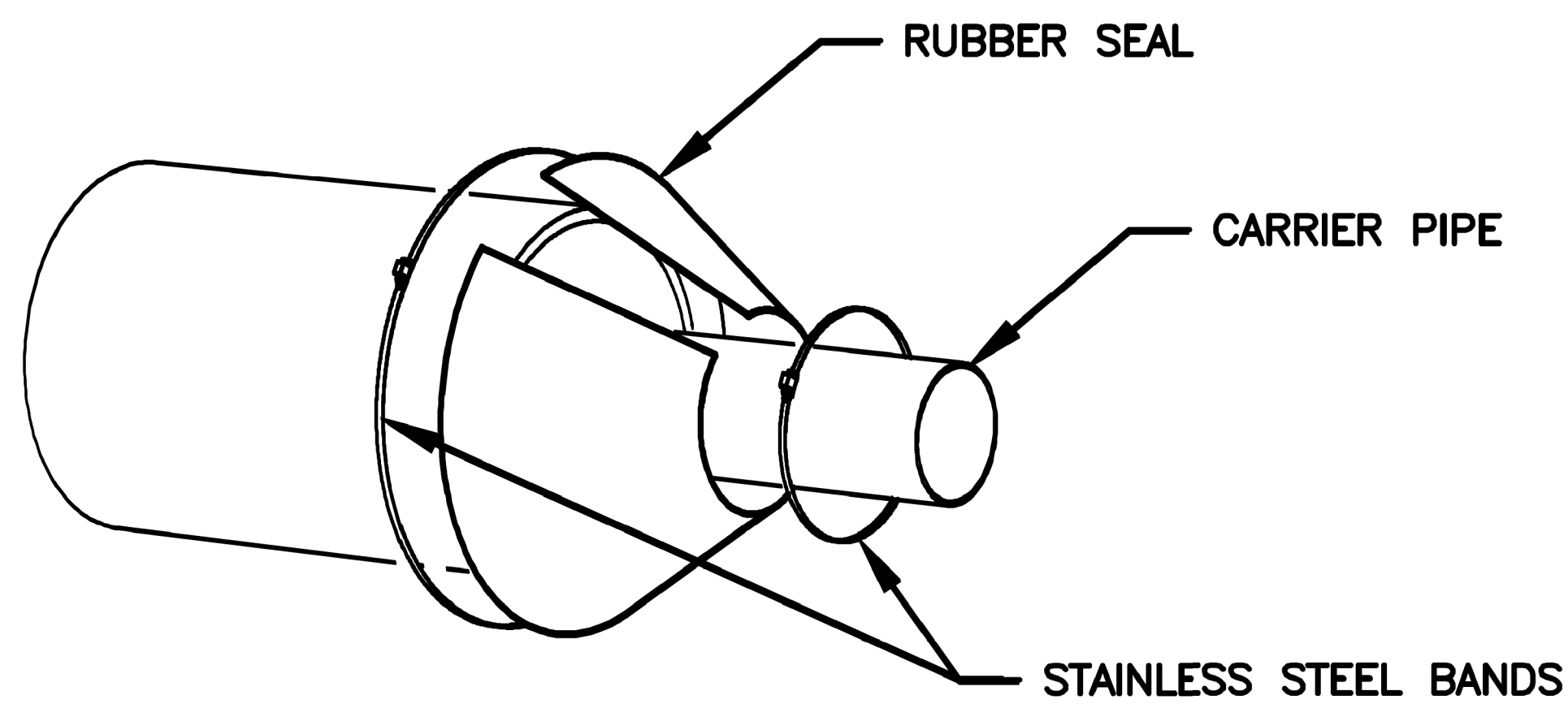


STAINLESS STEEL CASING SPACER

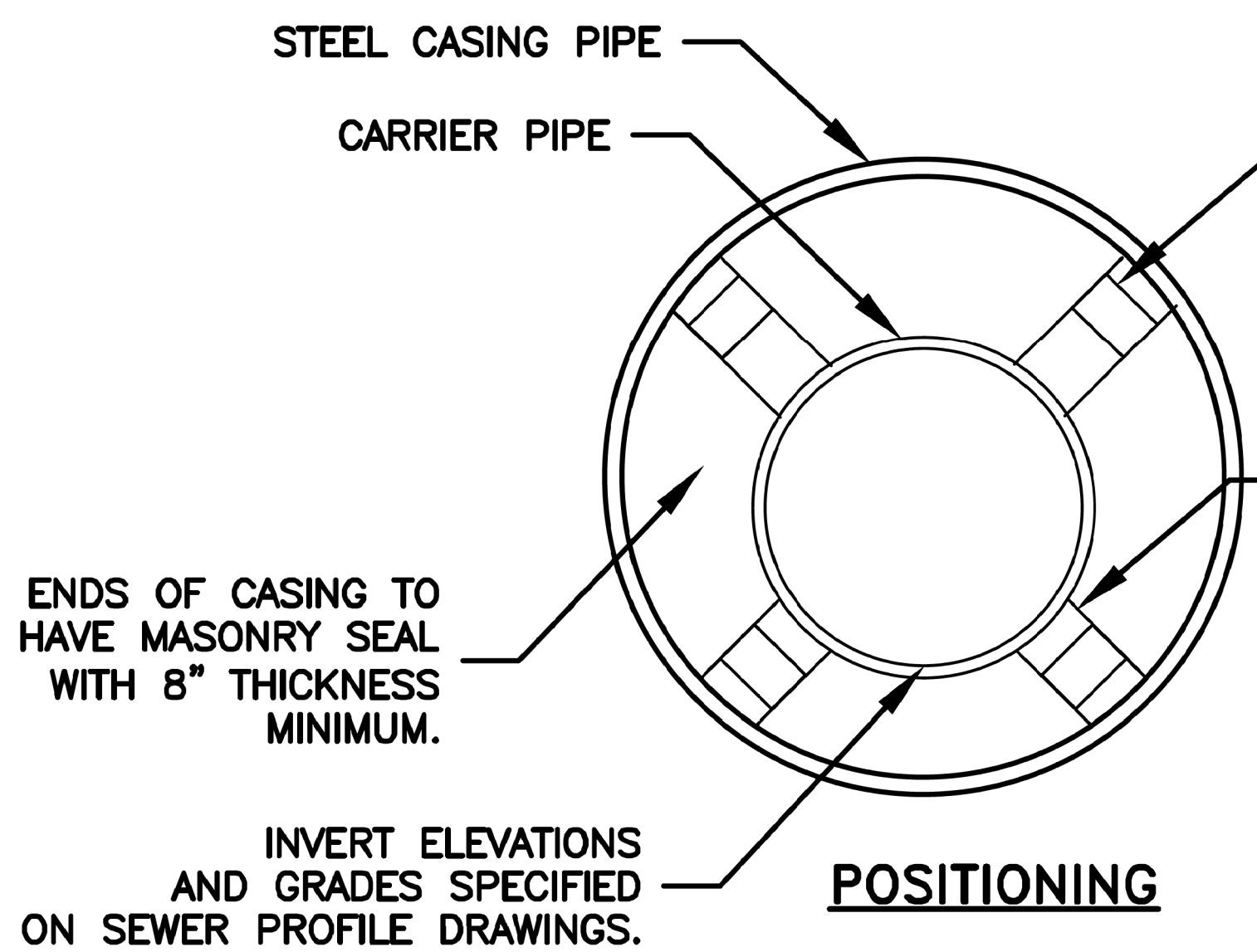
MIN. OF 2 PER STICK OF CARRIER PIPE (10' O.C. AND NOT MORE THAN 5' FROM EACH END OF CASING PIPE SPACING TYP.)



CASING END SEAL

NOTES

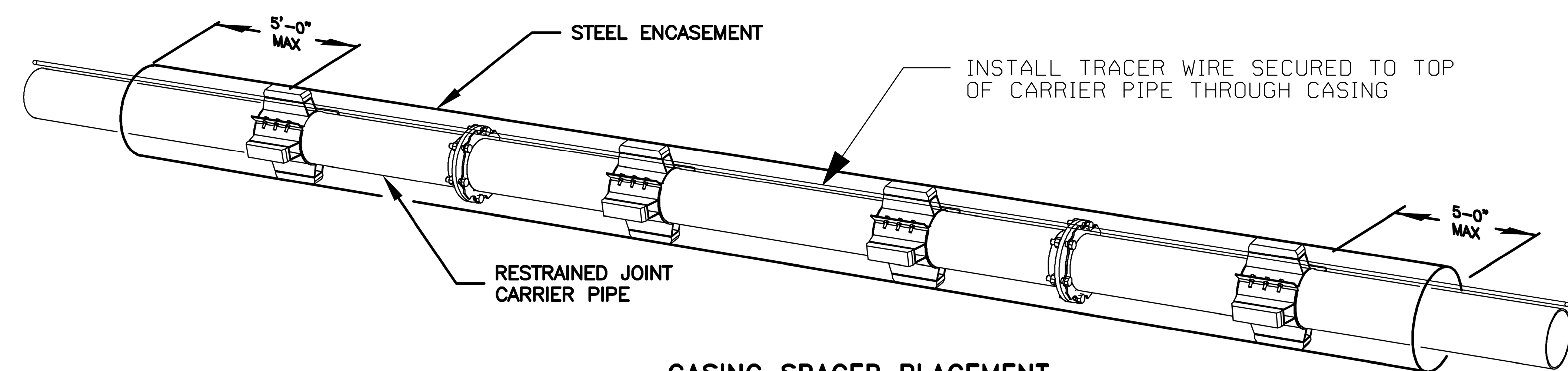
1. CASCADE CCS MODEL OR EQUAL
2. WATERMAIN SHALL BE RESTRAINED JOINT GASKET PIPE APPROVED BY THE VILLAGE ENGINEER
3. CASCADE CCES END SEALS REQUIRED



NUMBER OF RISER/RUNNERS REQ'D FOR STANDARD SPACERS
 4 RUNNERS 8"-24" PIPE
 6 RUNNERS 24"-36" PIPE
 7 RUNNERS 36"-48" PIPE

SPACERS AND RUNNERS FOR 24" PIPES & LESS PLACED 10' O.C. AND NO MORE THAN 5' FROM EACH END OF CASING PIPE. SEE TECHNICAL SPECS.

POSITIONING



CASING SPACER PLACEMENT DIAGRAM

WATER & SEWER MAIN CASING PIPE

Issued by: DLZ	10/11/00
By	Revised Date
SD	1/4/06
MJ	6/23/14
DS	1/26/23

VILLAGE OF GURNEE
ENGINEERING DIVISION

Approved by:
SD 1/4/06
SD 6/23/14
NL 1/26/23