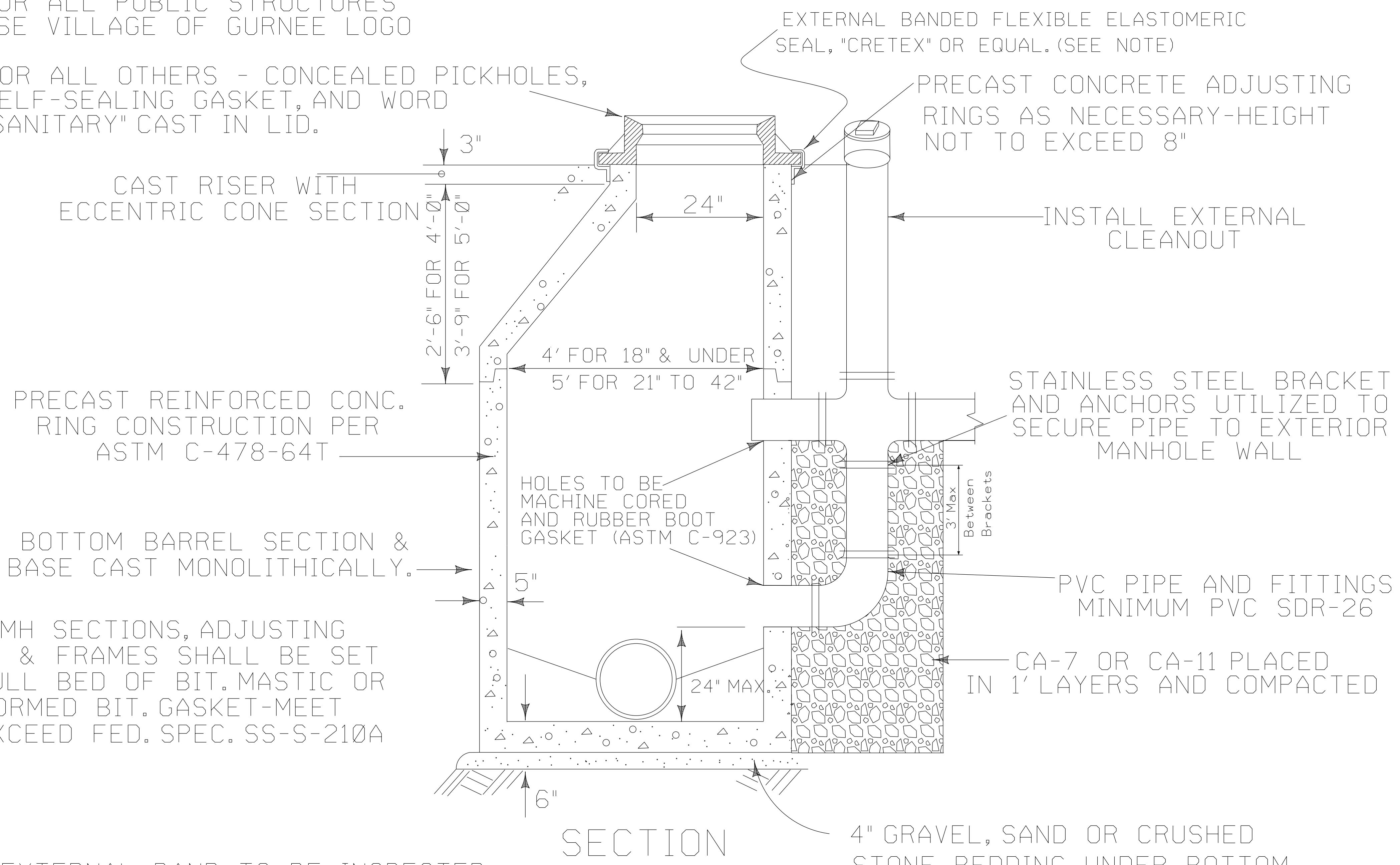


PROVIDE NEENAH R-1772C FRAME AND MANHOLE AS SPECIFIED BELOW:
 FOR ALL PUBLIC STRUCTURES USE VILLAGE OF GURNEE LOGO

FOR ALL OTHERS - CONCEALED PICKHOLES, SELF-SEALING GASKET, AND WORD "SANITARY" CAST IN LID.



NOTE: EXTERNAL BAND TO BE INSPECTED JUST PRIOR TO ANY PAVING OPERATIONS.

SANITARY DROP MANHOLE

Issued by: DLZ	10/11/00
Revised By	Date
SD	1/4/06
MJ	6/24/14
DS	2/3/23

VILLAGE OF GURNEE
 ENGINEERING DIVISION

Approved by:
SD 1/4/06
SD 6/24/14
NL 2/3/23