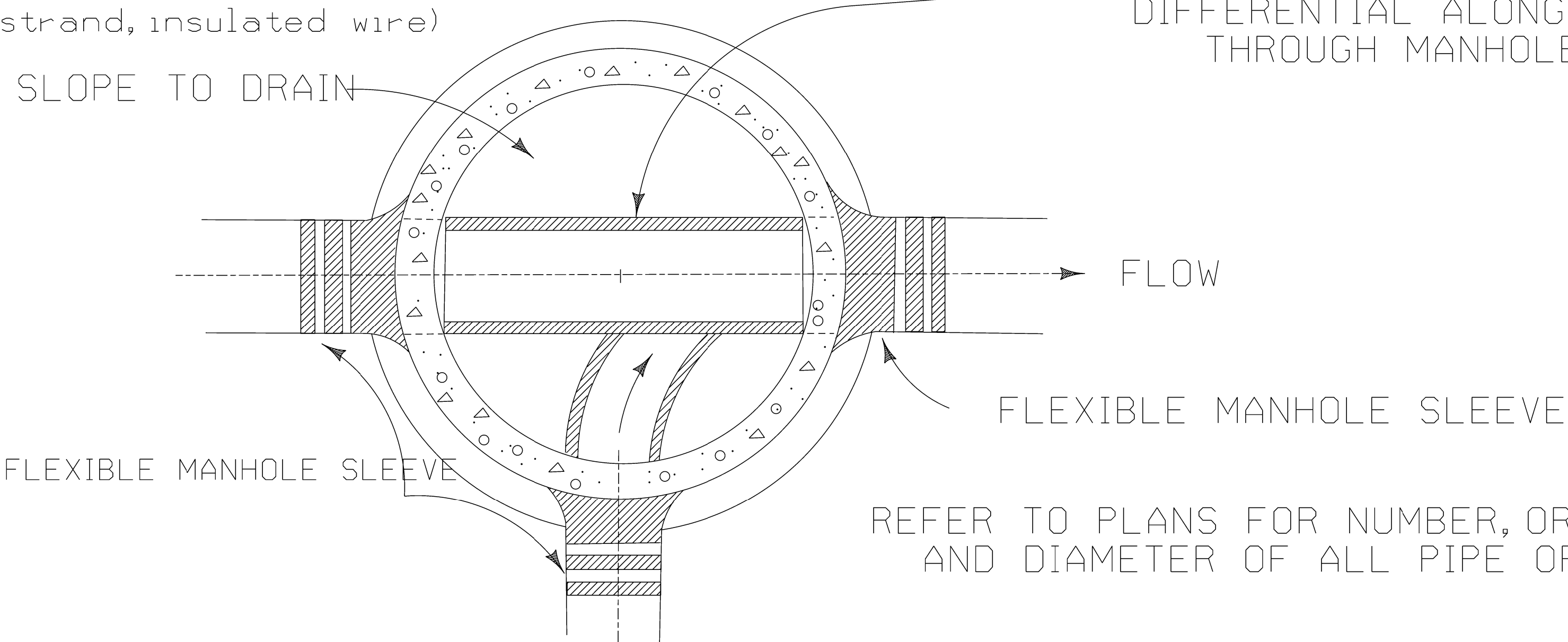


NOTE:

A tracing wire, if required, must be installed and brought to grade.
(12 gauge, solid strand, insulated wire)

SHOP MADE CONCRETE FILLET
PROVIDE MIN. 0.10' SLOPE
DIFFERENTIAL ALONG INVERT
THROUGH MANHOLE

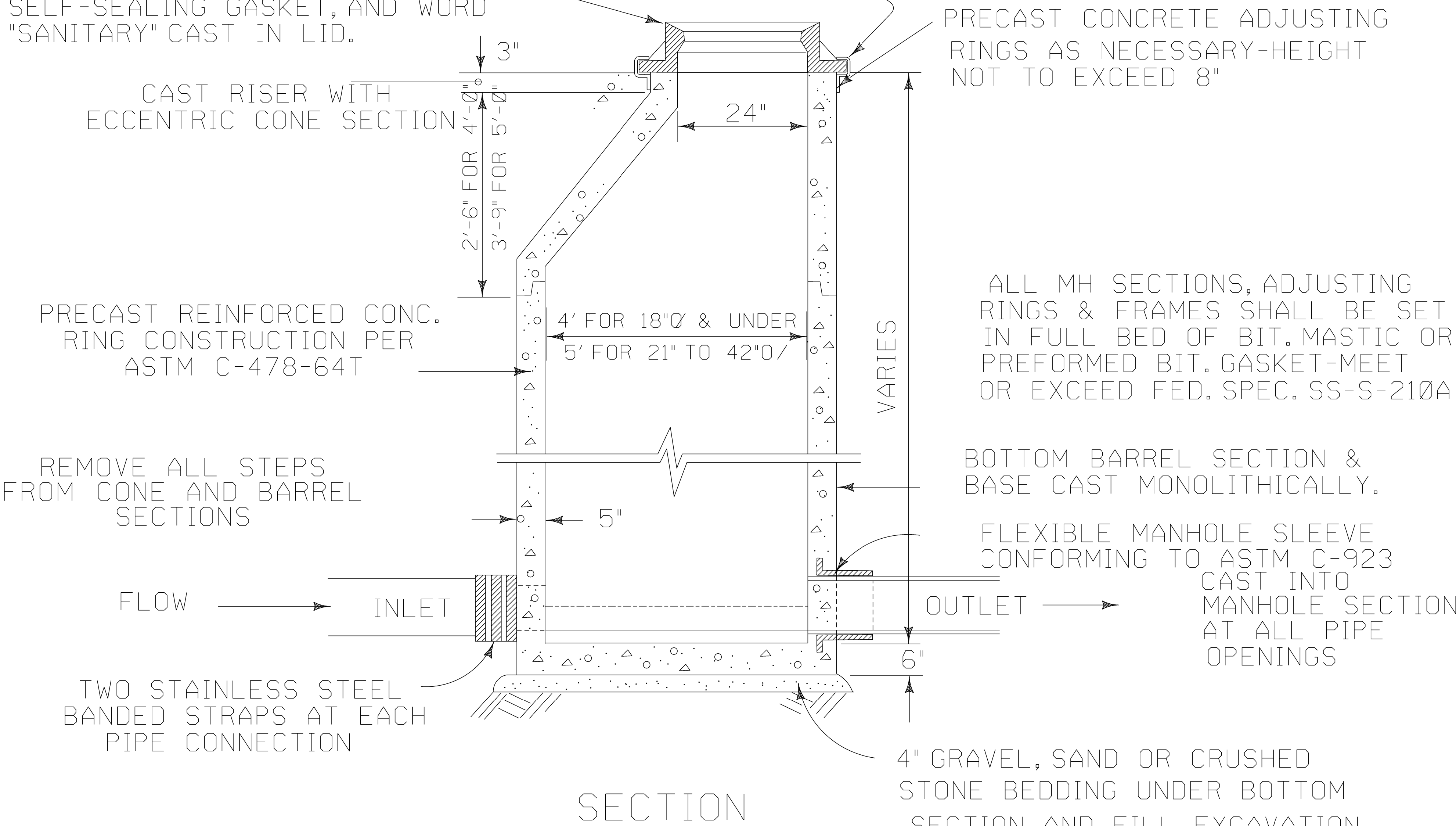
SLOPE TO DRAIN



PROVIDE NEENAH R-1772C FRAME AND
MANHOLE AS SPECIFIED BELOW:
FOR ALL PUBLIC STRUCTURES

(VILLAGE OF GURNEE LOGO)
FOR ALL OTHERS - CONCEALED PICKHOLES,
SELF-SEALING GASKET, AND WORD
"SANITARY" CAST IN LID.

EXTERNAL BANDED FLEXIBLE ELASTOMERIC
SEAL, "CRETEX" OR EQUAL. (SEE NOTE)



NOTE: EXTERNAL BAND TO BE INSPECTED
JUST PRIOR TO ANY PAVING
OPERATIONS.

SANITARY MANHOLE

Issued by: DLZ 10/11/00		
By	Revised	Date
SD		1/4/06
MJ		6/24/14
DS		10-28-25

VILLAGE OF GURNEE
ENGINEERING DIVISION

Approved by:	
SD	1/4/06
SD	6/24/14
NL	10/31/25