

**NOTE:**

A tracing wire, shall be installed and brought to grade.  
(12 gauge, solid strand, insulated wire)

MUELLER CENTURION, A-423-250

REFER TO PLANS FOR  
CORRECT ORIENTATION  
OF STEAMER NOZZLE

TO CONFORM TO  
MANUFACTURER'S  
SPECIFICATIONS

FINISH GRADE

"WATER" ON LID

VALVE BOXES TO BE  
3-PIECE, SCREW TYPE  
5 1/4" SHAFT WITH NO. 6  
ROUND BASE, TYLER  
6850-664S

5.5'  
MINIMUM

DRAIN FIELD TO  
BE MIN. 3 CY OF  
WASHED STONE  
INSURE DRAINS ARE  
NOT OBSTRUCTED

MECHANICAL JOINT INLET  
UNLESS OTHERWISE  
NOTED ON PLANS

CONCRETE  
SUPPORT

UNDISTURBED  
EARTH

WATERMAIN

STANDARD  
MJ BOLTS

6" MJ  
RESILIENT  
WEDGE G.V.

STANDARD MJ GASKETS

FIRE HYDRANT

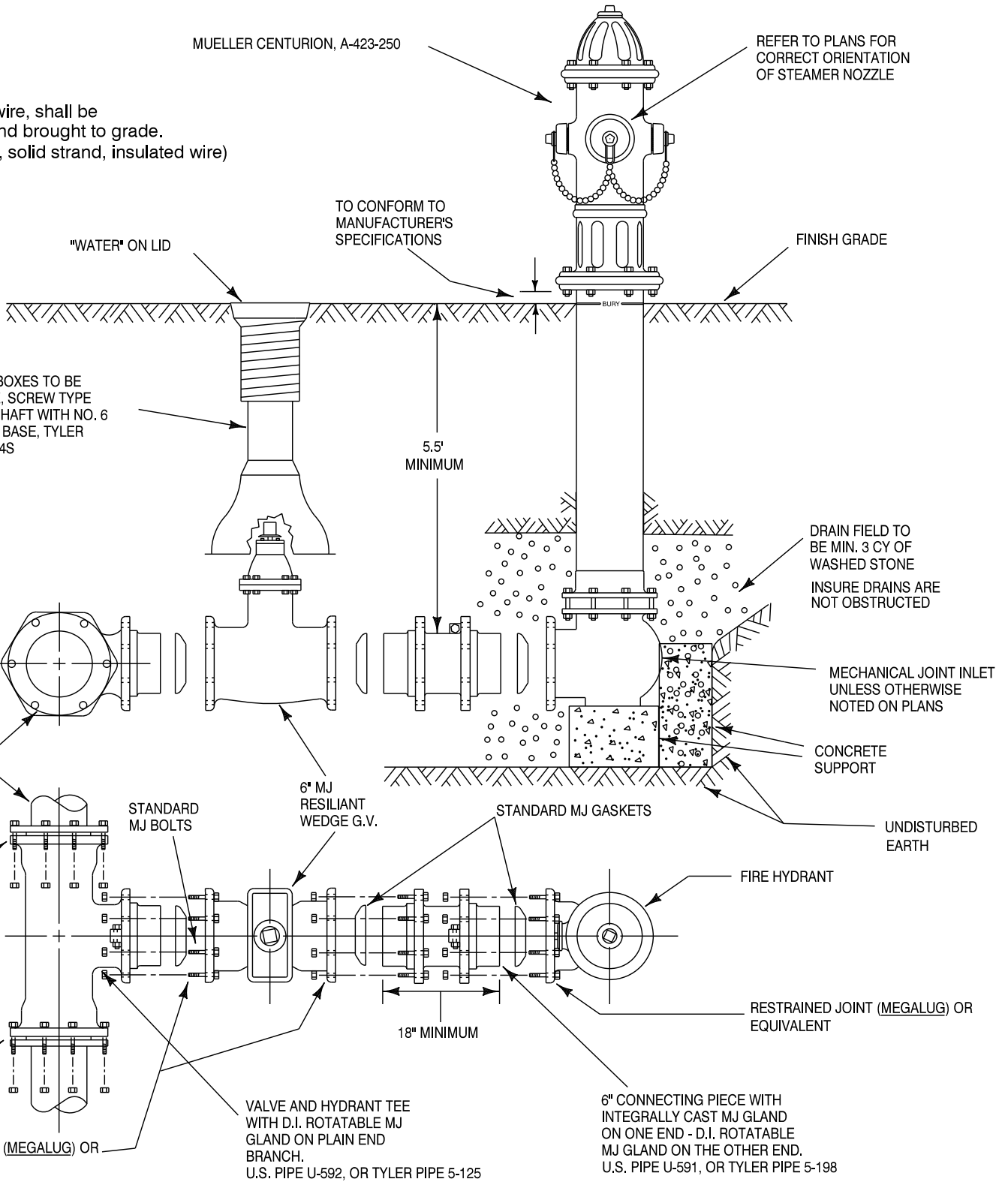
RESTRAINED JOINT (MEGALUG) OR  
EQUIVALENT

18" MINIMUM

RESTRAINED JOINT (MEGALUG) OR  
EQUIVALENT

VALVE AND HYDRANT TEE  
WITH D.I. ROTATABLE MJ  
GLAND ON PLAIN END  
BRANCH.  
U.S. PIPE U-592, OR TYLER PIPE 5-125

6" CONNECTING PIECE WITH  
INTEGRALLY CAST MJ GLAND  
ON ONE END - D.I. ROTATABLE  
MJ GLAND ON THE OTHER END.  
U.S. PIPE U-591, OR TYLER PIPE 5-198



# TYPICAL HYDRANT INSTALLATION

Issued		
By	Revised	Date
LG		4-04-00
EBV		2-10-03
SD		1-4-06
MAD		7-28-11
MJ		6-24-14

VILLAGE OF GURNEE  
ENGINEERING DIVISION

Approved by:	
SD	1/4/06
SD	7/29/11
SD	6/24/14