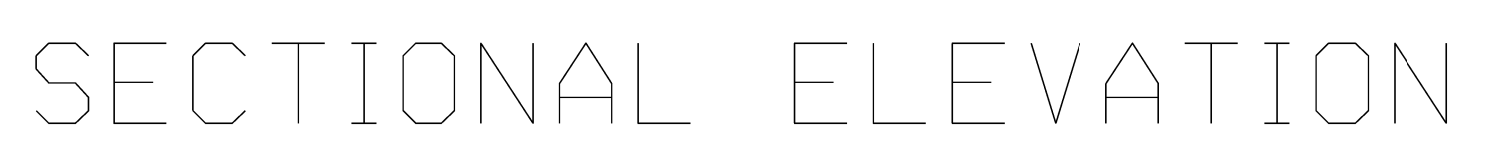


NOTE:
A tracing wire must be
installed and brought to grade.
(12 gauge, solid strand, insulated wire)



1. Dimension "D" Shall be 48" When Watermain is Less Than 10" in Diameter, 60" When Diameter of Main is 10" or 12", 72" When Diameter of Main is 14" or 16", and 84" When Diameter of Main is 18" or Larger.
2. For Valve Vaults Constructed Over Existing Mains, Such as at Pressure Connections or for Valve Insertions, Refer to Pressure Connection Detail.
3. The Contract Unit Price For "Valve Vault" Shall Include the Cost of Furnishing and Placing 3" Leveling Base as Specified, and the Cost of Furnishing and Placing the Specified Frame and Cover.
4. Frame Opening Shall be Aligned Over Operating Nut so that Valve can be Keyed Without Twist or Torque.
5. Use offset cones only when needed to center valve otherwise concentric.
6. Tracer wire must be connected with a splice connector to create one continuous signal through the wire.
7. Sacrificial zinc anode nuts are to be installed on all bolts.
8. Remove all steps from barrel and cone sections.

WATERMAIN VALVE VAULT

Issued	
By	Revised Date
LG	4-04-00
SD	1-4-06
MJ	6-25-14
JB	12-15-22
DS	1-26-23
DS	10-29-25

VILLAGE OF GURNEE
ENGINEERING DIVISION

Approved by:	
SD	1/4/06
MJ	6/25/14
NL	1/26/23
NL	10/31/25