

Gurnee Police Department Memorandum

TO Chief Woodside
FROM TST Phil Brunell
SUBJECT Follow-up Evaluation Report Washington & Hunt Club
DATE 12/18/13

Sir,

Per the Lake County Department of Transportation photo enforcement policy, we are required to present an evaluation report after one year of operation of a photo enforced intersection. The intersection at Washington Street and Hunt Club Road has been operational for over one year and is due for the report.

In accordance with their policy the following information is needed for the evaluation report:

- Intersection Location(s).
- Date of implementation.
- RLR Camera System manufacturer and contractor name.
- Crash data specific to the RLR location(s) for the 3-year period prior to and for the period post RLR Camera installation. The crash data shall include yearly collision diagrams of the intersection(s).
- An analysis of the crash data, including a summary of any increases or decreases in crash types.
- Signal timings and other settings before and after RLR Camera installation.
- Traffic volumes before and after RLR Camera System installation. The traffic volumes shall include both Average Daily and Peak Period traffic.
- Recommendations to further reduce red light violations and severe crashes and to improve the operation of the intersection(s).
- Summary of adjudication experience and results.
- Financial Report identifying the number citations issued, cost associated with the RLR Camera System, and fees collected.

The information contained within this report will for the most part cover a 12-month time period of August 2012 through July 2013.

The crash data requested can only be provided for the time period of August 2012 through December 2012. The reason for this is that 2013 crash data is not currently available from the Illinois Department of Transportation.

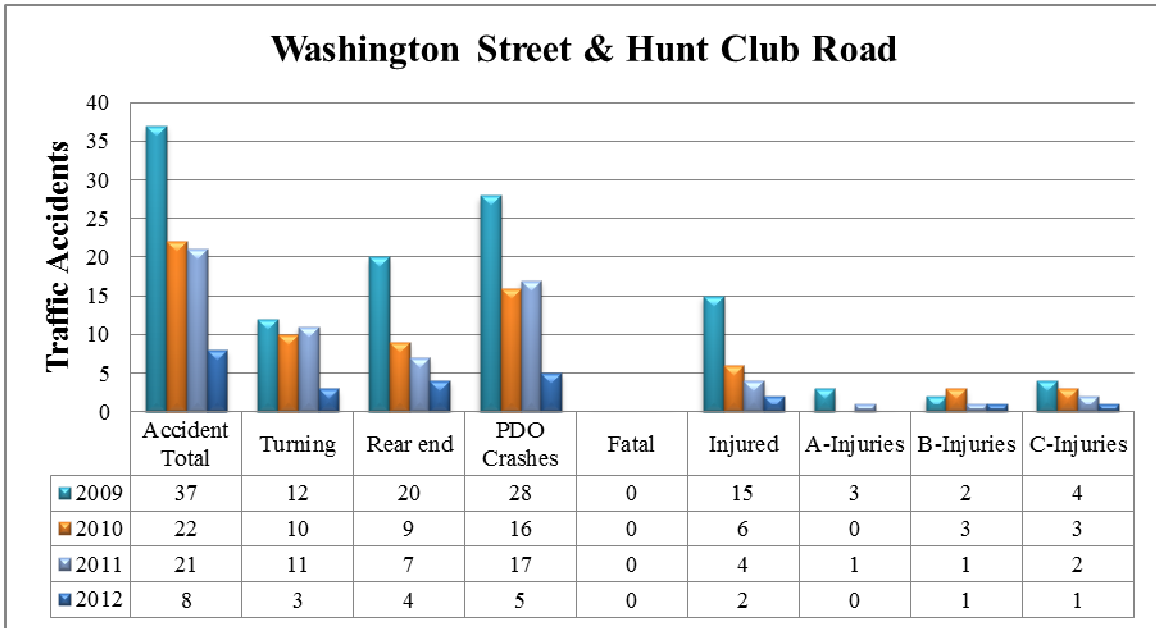
Overview

Photo enforcement was installed for the eastbound approach on Washington Street at Hunt Club Road. On July 31, 2012 a warning phase began at the approach. On August 14, 2012, the warning phase was completed and citations began being issued. The equipment is owned and operated by Redflex Traffic Systems, Inc.

Accident Data

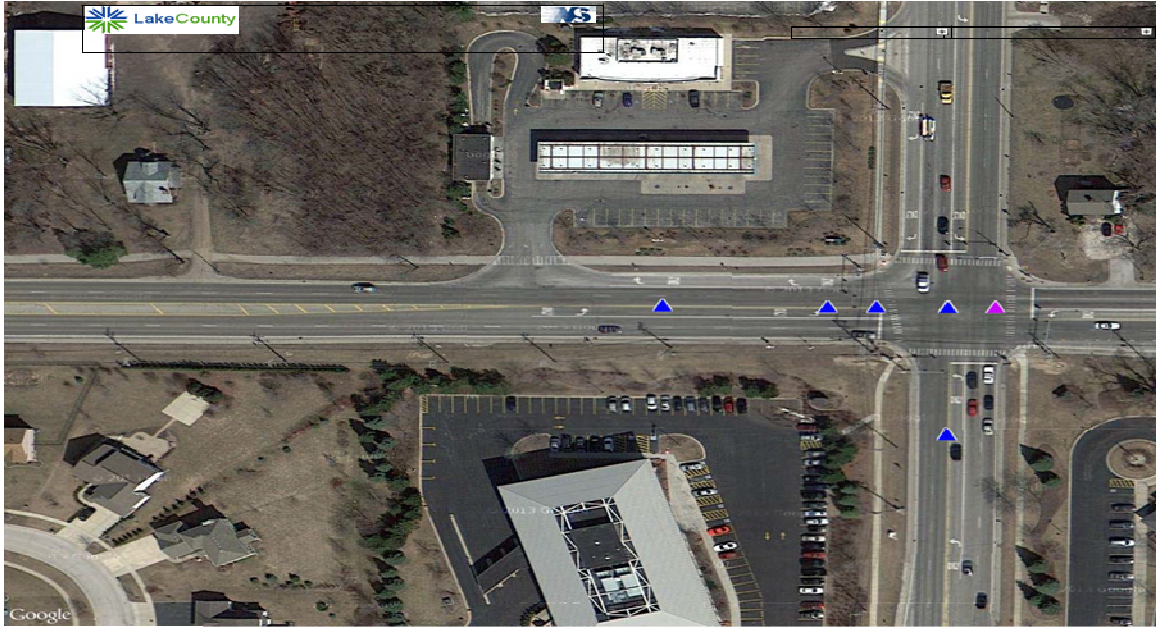
Crash data specific to the RLR location(s) for the 3-year period prior to and for the period post RLR Camera installation (7 months). The crash data shall include yearly collision diagrams of the intersection(s).

Exhibit #1

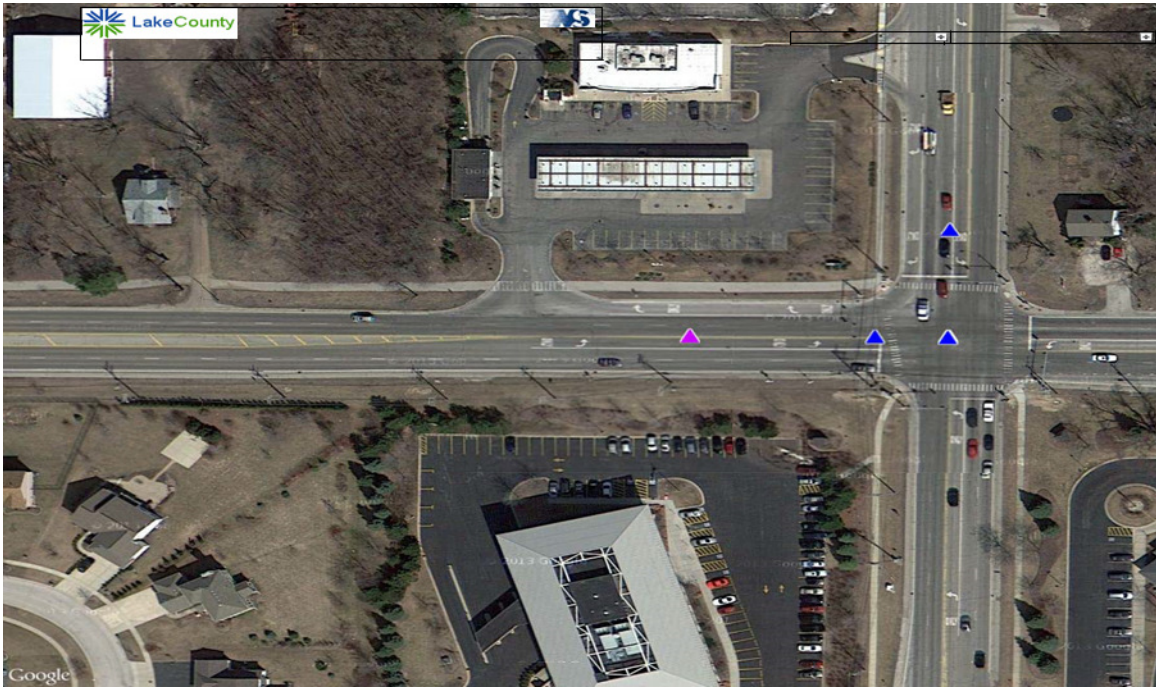


Note*** 2012 Data denotes January 1st 2012 to July 31st 2012 (7 months)

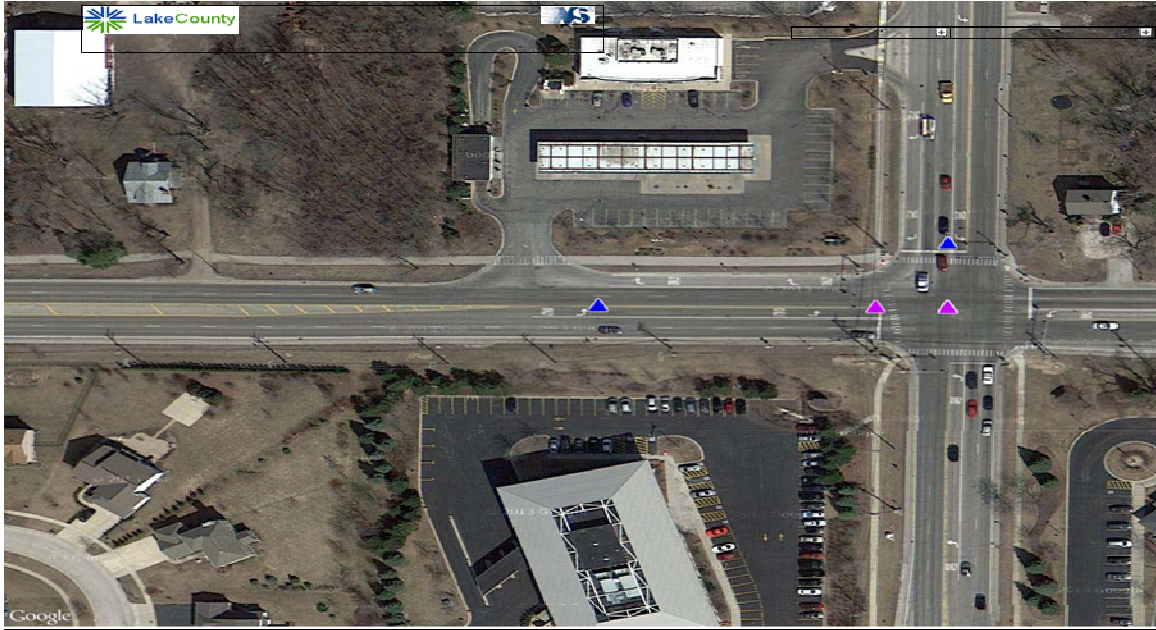
2009 Traffic Accident Map (Data located on Exhibit #1)



2010 Traffic Accident Map (Data located on Exhibit #1)



2011 Traffic Accident Map (Data located on Exhibit #1)



2012 Traffic Accident Map (Data located on Exhibit #1)

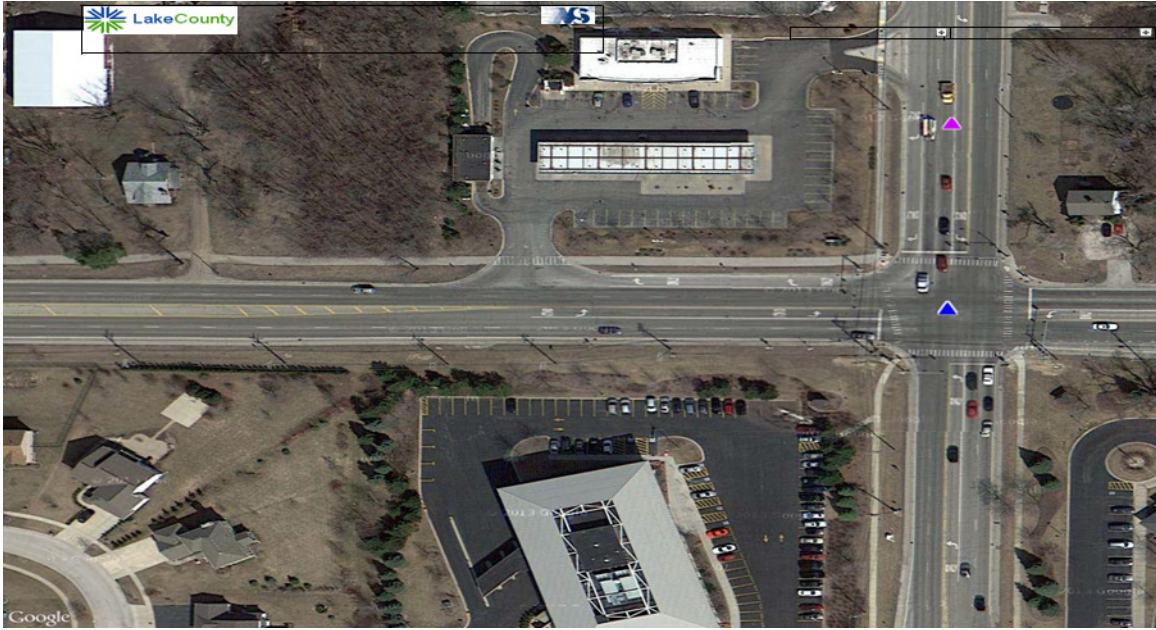
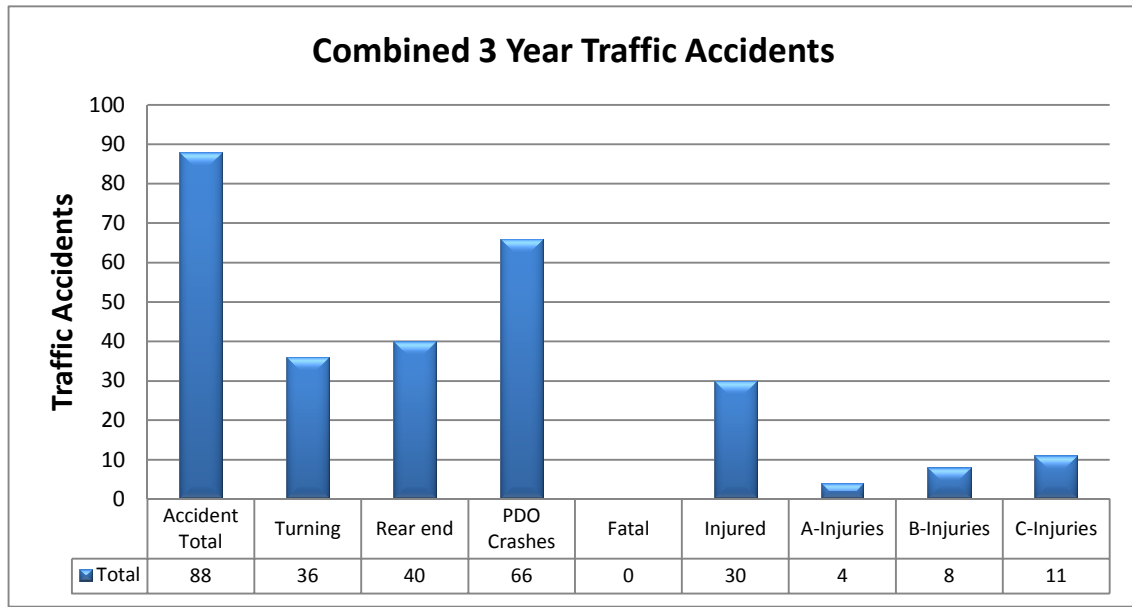


Exhibit #2



Combined 3 Year Traffic Accident Map (Data located on Exhibit #2)

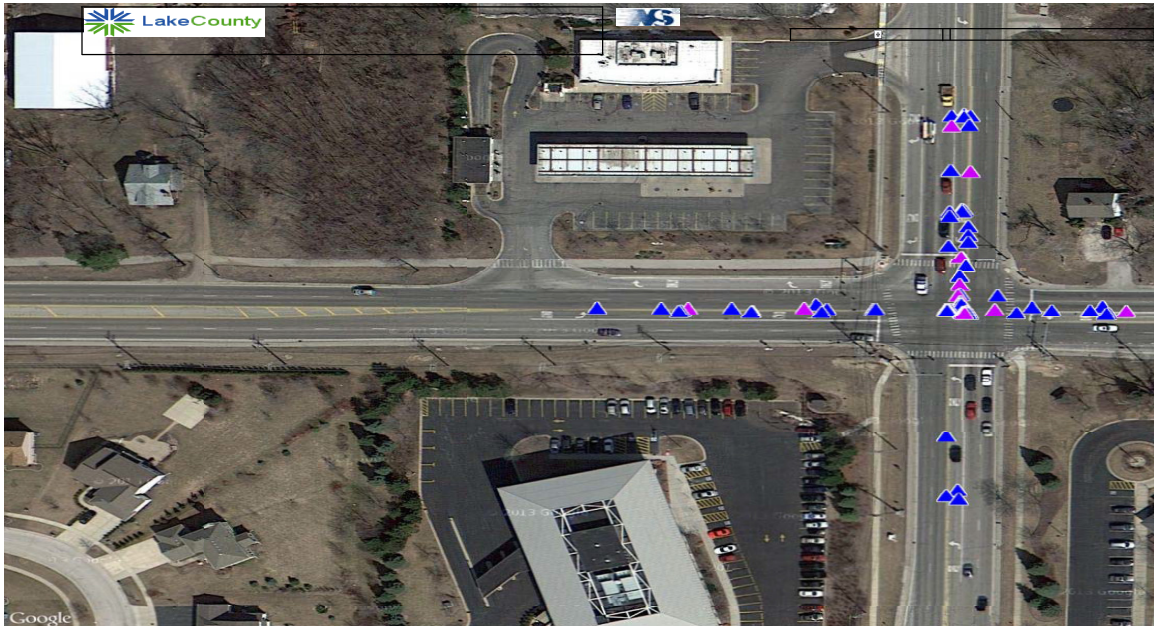
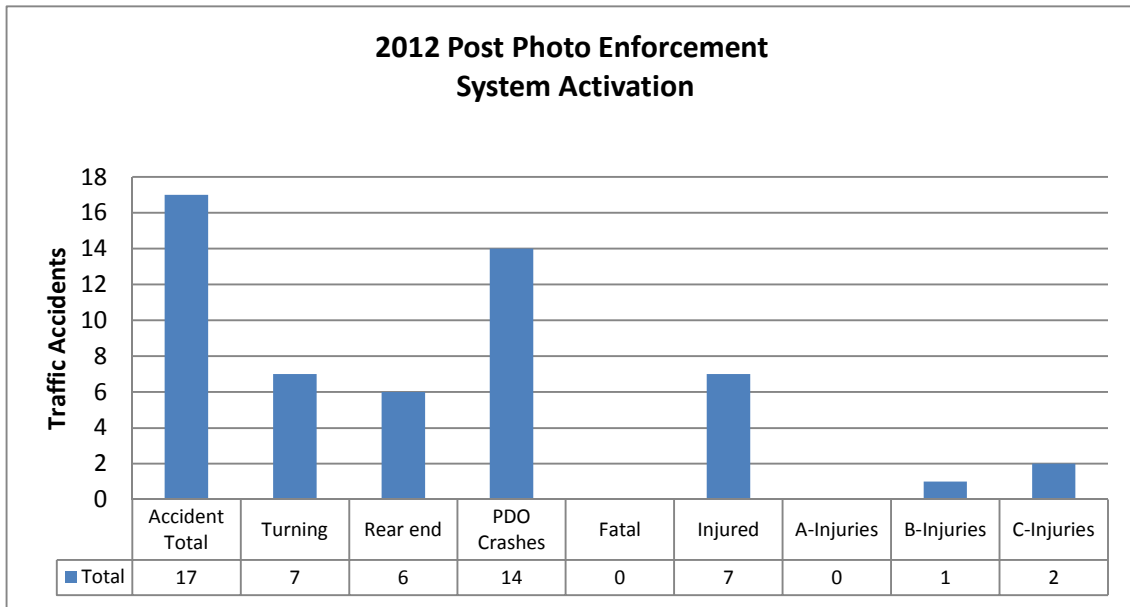
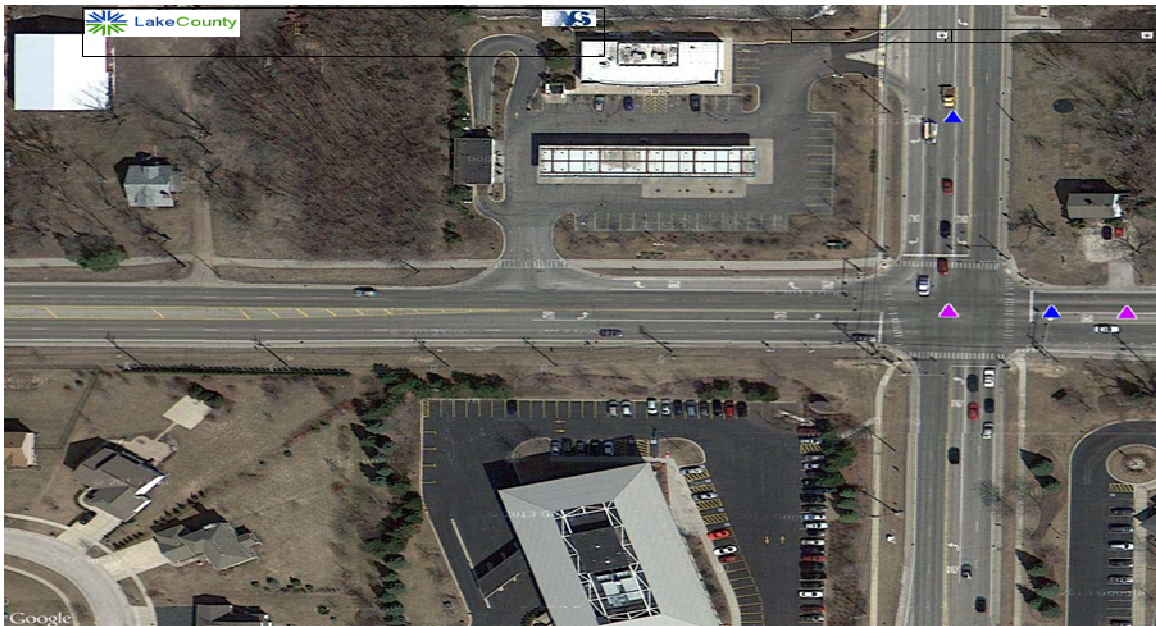


Exhibit #3



Note*** Data for this chart is from August 1, 2012 through December 31, 2012. This is the most recent, verifiable data available from the Illinois Department of Transportation.

2012 Post RLC System Activation Map (Data located on Exhibit #3)



Signal Timings

The traffic signal timings are not under control of the Village of Gurnee. As such, we do not possess this information.

Traffic Volumes

The average daily traffic counts are supplied by the Lake County Department of Transportation at: <http://lake.ms2soft.com>. The average daily traffic volume for the Intersection is: 42,800 vehicles, per day. The average daily traffic counts for each approach are supplied by the Illinois Department of Transportation at: <http://www.dot.state.il.us/maps/statistical.htm>.

Washington Street westbound - 21,800

Washington Street eastbound - 19,800

Hunt Club Road northbound - 17,500

Hunt Club Road southbound - 21,300

Recommendations

The recommendation is to keep the eastbound photo enforcement approach operational and to continue to analyze the intersection crash data over the next three years, to get a better sampling of post photo enforcement data. An improvement to the intersection is to grant a permit for the westbound Washington Street approach at Hunt Club Road. The infrastructure for this approach is already in place and is awaiting the permitting process.

Adjudication Process

Our administrative adjudication system does not segregate enforcement approaches. As such, we are unable to provide data specific to Washington Street and Hunt Club Road.

During the examined time period we conducted 610 administrative hearings related to photo enforcement citations issued system-wide. Of those hearings, 464 of those were found to be Liable including those who failed to appear at their scheduled hearing.

Financial Report

The total number of citations issued at the eastbound Washington Street at Hunt Club Road intersection from August 2012 through July 2013 was 1057. The total fine money collected was \$104,483.00. When you subtract the lease payments for the system for the same period totaled \$60,000. The net revenue to the village during this period was \$44,483.00.