

ADDENDUM NO. 1

DATE: September 19, 2025

PROJECT: **FY26 Drainage Miscellaneous – Gurnee #8465**

OWNER: VILLAGE OF GURNEE

TO: PROSPECTIVE BIDDERS

This Addendum forms a part of the Contract Documents and modifies the Bidding Documents approved for bid, with the amendments as noted below.

This Addendum consists of 2 pages. This Addendum contains the following revisions:

1. Revision the 925 Elsie Improvement location
2. Revision to the Pay Items
3. Update to Pay Item **RESTORATION (TOPSOIL PLACEMENT 4", SEEDING AND BLANKET)**

CHANGES TO THE CONTRACT DOCUMENTS AND SPECIFICATIONS:

Project Manual:

- Item 1: Replace page 23 of 23 **The 925 Elsie Improvement Page** with page 2 of this addendum.
 - NOTE: The contractor will not pave over the top of the pipe but place 4 inches of topsoil, seed, and blanket. Stone will be backfilled to approximately 4 to 6 inches below final grade.
- Item 2: Replace Schedule of Prices page with Page 3 of this document.
- Update: Straw blanket may be used in substitute to Futerra® F4 Netless.

Signed: Nicholas Leach

Nicholas Leach
Village Engineer
Village of Gurnee

Please acknowledge receipt of this Addendum by signing below and faxing or emailing a copy of the Addendum to the Village of Gurnee, Engineering Department at (847)-599-7550 or engineering@village.gurnee.il.us. Failure to do may disqualify the Bidder.

Firm

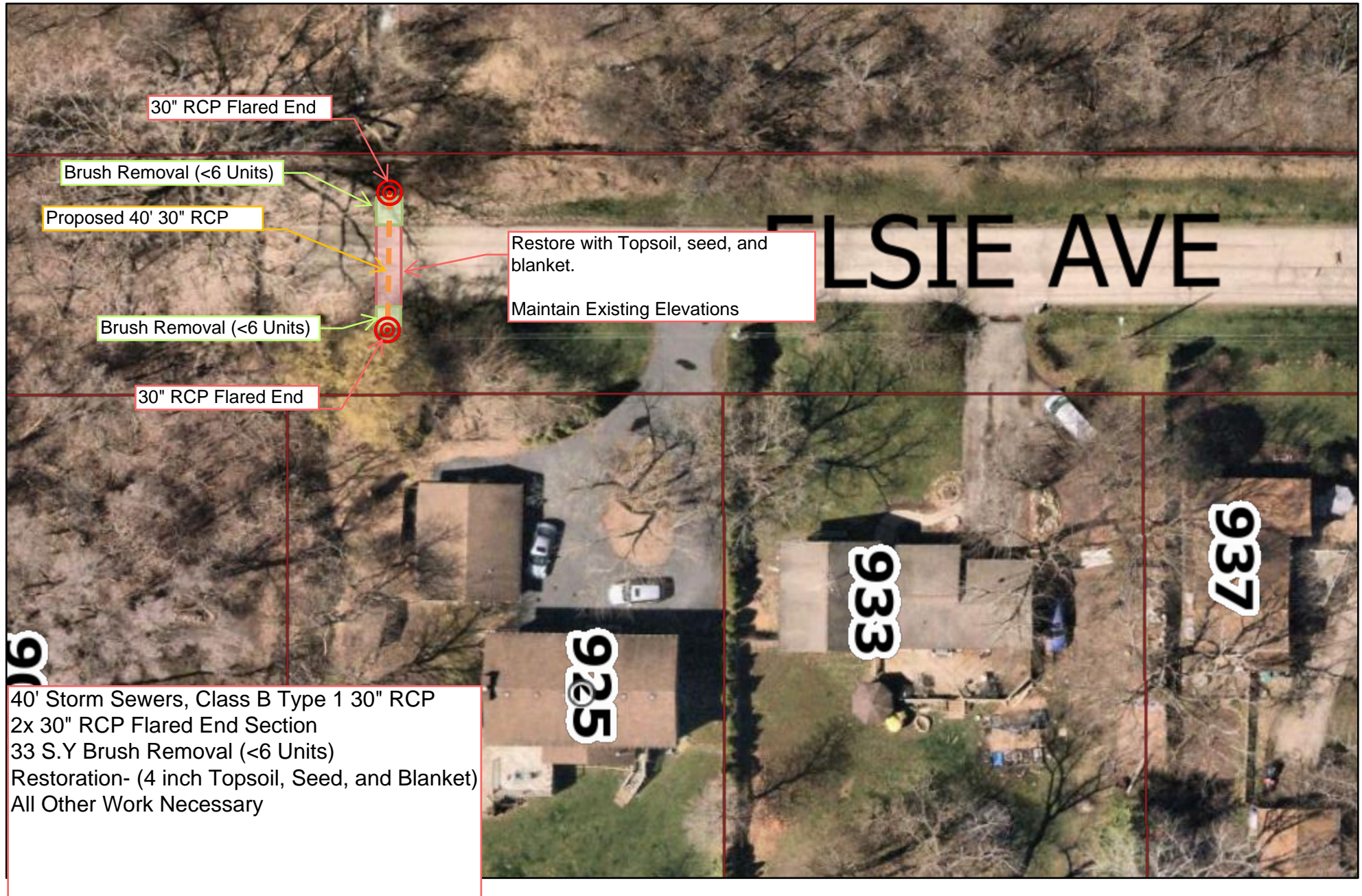
By

Name

Title

925 Elsie Improvement

Addendum Page 2



SCHEDULE OF PRICES*(For complete information covering these items, see plans and specifications)*

ITEM NO.	ITEM	UNIT	QUANTITY	UNIT COST	TOTAL
1	STORM SEWERS, CLASS B TYPE 1 12" RCP	LF	312		
2	30" RCP FLARED END SECTION	EACH	2		
3	STORM SEWERS, CLASS B TYPE 1 30" RCP	LF	40		
4	10-15" CMP PIPE REMOVAL	LF	310		
5	2' INLET, TYPE-A, TYPE 8 GRATE	EA	3		
6	GRADING AND SHAPING OF DITCHES	SY	480		
7	HMA DRIVEWAY REMOVAL & REPLACEMENT (3 INCH SURFACE)	SY	90		
8	HMA ROADWAY REMOVAL AND REPLACEMENT (2.5-INCH BINDER, 1.5-INCH SURFACE)	SY	55		
9	HMA REPLACEMENT (2.5-INCH BINDER, 1.5-INCH SURFACE)	SY	0		
10	SUMP PUMP TIE-IN	EA	1		
11	RESTORATION (THREE SITES)	LS	1		
12	BRUSH REMOVAL (<6 INCH)	SY	125		
13	TREE REMOVAL (6 TO 15 UNITS DIAMETER)	UNITS	30		
14	TREE REMOVAL (OVER 15 UNITS DIAMETER)	UNITS	20		
15	TRENCH BACKFILL CA6	CY	55		
TOTAL PROJECT COST:					